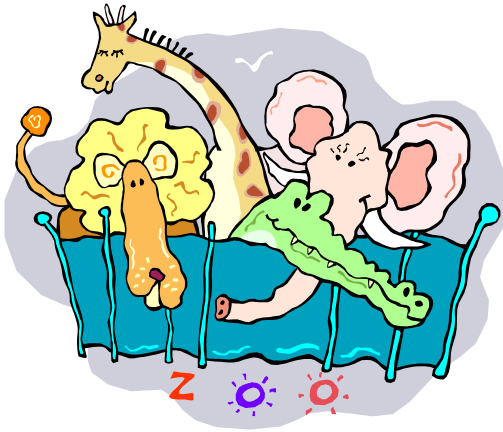


**Objective** Concepts (rhyming, repetition of words, images, organisms, wild, ease, nectar, shelter, dependence on environment - garden, park, beach, woods, lake); Sight words (that, “The End”, fish, with, want, certain)



Vocabulary	
that	with
“The End”	want
fish	certain

## Rhyming Animals

By: Sue Peterson

This is a poem about many animals that live in, by and around you. This is a poem about many animals you see. It repeats the sound of words, too. Poems that repeat the sounds of words are called rhymes.

Can you try to see in your mind the images of the many animals that I talk about when you read the poem? Are they large or small, do they live inside or outside? These animals live in different places - the garden, a park, the zoo, the beach, the woods, a lake or an ocean.

## Animals – A Rhyming Poem

Animals live in many places – in water, grass, and trees.  
Some hop, some jump, some climb, while others run with ease.  
Animals can swim in lakes or fly high in the sky.  
Smaller ones crawl in the rocks for a shady place to lie.  
Whales dive deep to look for food in an ocean or a sea.  
And bees buzz among the flowers, gathering nectar happily.  
If I could be an animal – perhaps a deer or bear,  
I would live wild in the woods and run from here to there.

The End

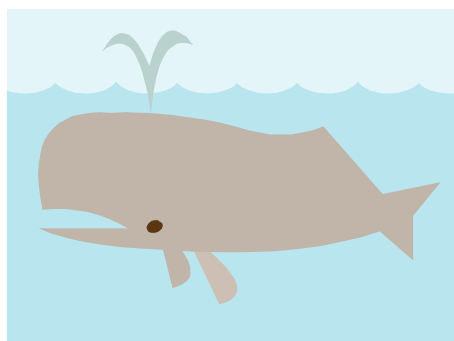
This is a poem about many animals that live in, by and around you. It rhymes or repeats the sounds in the words at the end of the sentences. Can you tell which words rhyme or sound the same? Does bear and there rhyme? How about sky and lie?

Have you seen some of animals that I talk about? Do the images of lions or tigers, worms or grasshoppers, butterflies

or bees, snails or frogs, squirrels or deer, ducks or fish come to your mind when you hear the words? The animals are big and small and live in many places with other animals.

Do you see that these animals are dependent on their environment (where they live) for food and shelter? The poem talks about bees needing flowers for nectar. Do you know what bees make with nectar? What do the whales want when they dive deep? Is there an animal you are certain likes to climb trees to live in for shelter?

This poem is a rhyming poem about animals. It tells where some animals live and how they move and find food.



## Practice

### Language Work

A. Fill in the blank and spell.

that            \_\_\_ \_\_\_ a t            \_\_\_\_\_

want            w \_\_\_ \_\_\_ t            \_\_\_\_\_

with            w i \_\_\_ \_\_\_            \_\_\_\_\_

fish            f i \_\_\_ \_\_\_            \_\_\_\_\_

B. Use each word(s) in a sentence. Underline the word(s) used.

certain \_\_\_\_\_

\_\_\_\_\_.

garden \_\_\_\_\_

\_\_\_\_\_.

park (place) \_\_\_\_\_

\_\_\_\_\_.

beach \_\_\_\_\_

\_\_\_\_\_.

woods \_\_\_\_\_

\_\_\_\_\_.

lake \_\_\_\_\_

---

**Multiple-Choice Questions** (Put an X in front of the correct answer.)

1. Words that repeat parts of themselves are called rhyming words.

Which **3** of these groups of words “rhyme”?

- a. shade, aid
- b. shade, sun
- c. find, mind
- d. find, found
- e. you, me
- f. you, too
- g. The End

2. In this sentence from the text, what do the words “dependent on” mean? (“Do you see that these animals are **dependent on** their environment (where they live) for food and shelter?”)

- a. not used by
- b. supported and needed by
- c. not needed by
- d. not found in

3. The text talks about seeing images when you read a poem.

What **2** “images” might you see on a hot day?

- a. snow falling from the sky
- b. children wearing shorts
- c. children swimming at a beach
- d. a fire in a fireplace

**Extended Response** (Answer in complete sentences.)

1. Why are the words “The End” used in the poem? What do these words mean?

---

---

---

2. The word “certain” means to be sure of something. Write a sentence about something you are “certain” will happen to you today. Underline the word.

---

---

---

---

3. Individual animals and plants are called “organisms”. The poem *Animals – A Rhyming Poem* is about many animals which live in, by and around you. Now, it is your turn to write a poem about an “organism”. Select one animal and write a poem that uses repetition of rhyme. Your poem needs to be at least 4 lines long. The poem needs a title. Use the words “The End” after you finish writing your poem. You should have your first two lines rhyme. The third and fourth lines should also rhyme.

---

---

---

---

---

---

---

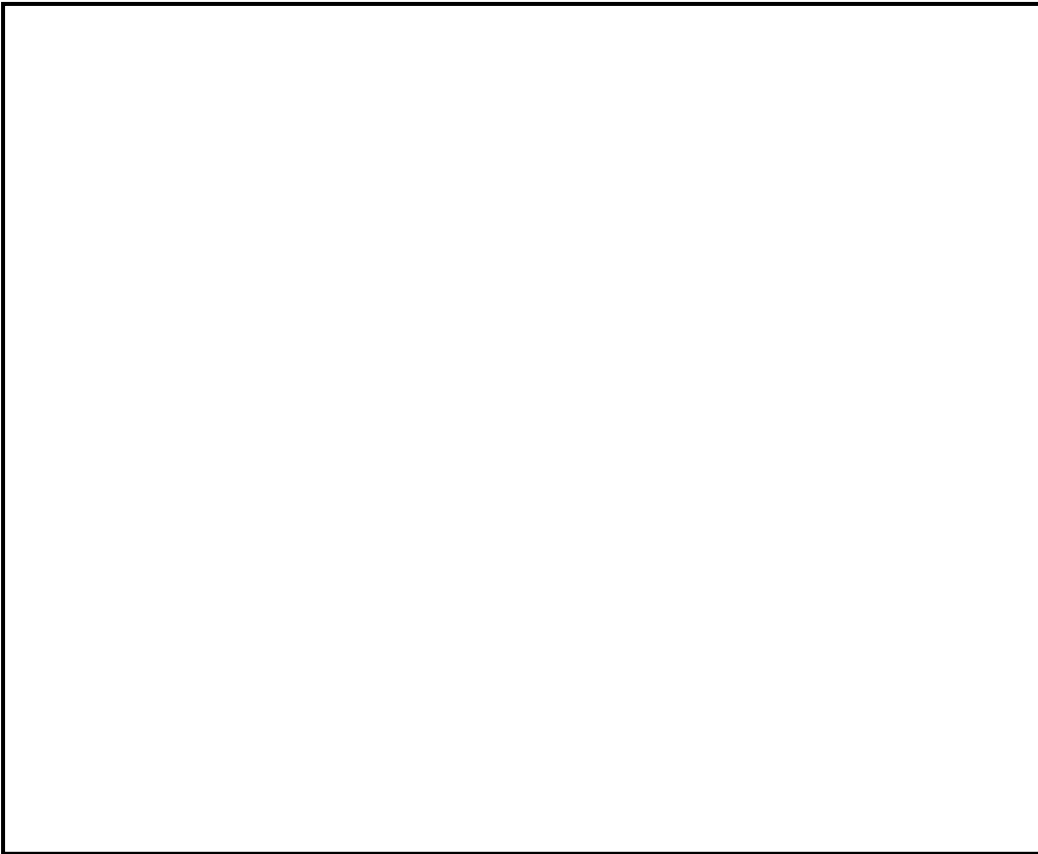
---

---

---

---

4. Draw a picture to go with your poem.



# Answer Sheet

Answers for Matching, Multiple-Choice Questions, and Extended Response

## Rhyming Animals

### Multiple-Choice Questions

1. a, c, f
2. b
3. b, c

### Extended Response

1. The words “The End” tell you the poem is over. They are used to end the poem.
2. Accept any reasonable sentence that uses the word “certain”.
3. The original poem must have a minimum of 4 lines that rhyme (the first two lines must rhyme and the next two lines must rhyme). The poem needs a title and the words “The End”. (The poem can be longer than the requirements listed.)